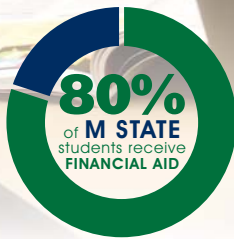


M STATE FAST FACTS



**\$300
thousand**
— \$\$\$\$ —
IN SCHOLARSHIPS
AWARDED EACH YEAR



Who is M State? M State is the fifth-largest outstate college in the Minnesota State system and the largest two-year college in Greater Minnesota, serving more than 8,000 students each year. But don't be fooled by our size. At M State you'll find the best of both worlds: big-college resources and a small-college feel on our four welcoming campuses and in our many online courses and programs.

Admissions

1. Complete the online application at minnesota.edu/apply.
2. Provide M State with your official transcripts.
3. Pay your \$20 application fee.

Financial Aid

- Fill out the Free Application for Federal Student Aid at fafsa.ed.gov.
- The FAFSA is used to demonstrate financial need, which is a requirement for many grants and scholarships.
- M State's FAFSA Code is **005541**.

Learn More. Pay Less!

M State helps make college possible with many programs that help lower the cost of earning a degree.

- Alliss Grant
- Business sponsorships
- Foundation scholarships
- Postsecondary Enrollment Options (PSEO)

Learn more at minnesota.edu/aid.

Scholarships

- M State awards more than \$300,000 in scholarships each year through its campus foundations, thanks to the generosity of the college's supporters and alumni.
- In most cases, you'll be considered for all scholarships for which you qualify, so there's no need to fill out separate applications.
- Learn more at minnesota.edu/scholarships.

Tuition and Fees*

Thousands of M State students attend college tuition-free!

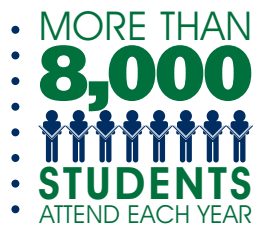
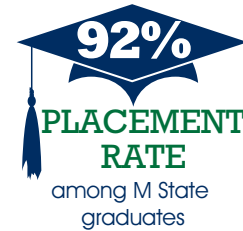
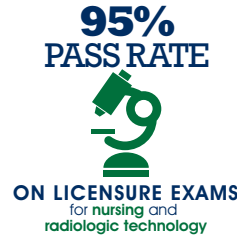
- Average annual tuition and fees for full-time student (before scholarship and grants): **\$5,296**
- Resident and non-resident tuition: **\$160.70** per credit
- Online tuition: **\$198.95** per credit

* Tuition rates based on 2018-19 academic year



minnesota.edu | 877.450.3322 | info@minnesota.edu | minnesota.edu/help





It's all about *choices.*

Ready to start or advance your career in two years or less? Want to complete the first two years of your four-year degree? Looking for the flexibility of online courses? M State can fit your life.

Learn more at minnesota.edu/degrees

ASSOCIATE OF ARTS (AA)

- Individualized Studies
- Liberal Arts and Sciences/ General Education
- Liberal Arts and Sciences - Social Science Emphasis

ASSOCIATE DEGREE TRANSFER PATHWAYS

- Accounting
- Biology
- Business
- Political Science
- Psychology
- Theatre

AGRICULTURE, FOOD AND NATURAL RESOURCES

- Environmental Science
- Fundamentals of Culinary Arts

ARTS, COMMUNICATION AND COMPUTER/INFORMATION SYSTEMS

- American Sign Language
- Cisco Networking
- Computer Programming
- Cybersecurity
- Graphic Design
- Information Technology
- Information Technology: Database Administration
- Music
- Network Security
- Sign Language Interpreting - Medical
- Visual Art
- Web Design

BUSINESS, ADMINISTRATION AND MANAGEMENT

- Accounting
- Accounting Clerk
- Administrative Office Assistant (Finance, Human Resources or Legal)
- Administrative Support
- Business Administration
- Business Entrepreneurship
- Business: Management, Marketing and Sales
- Business: Marketing and Sales
- Entrepreneur Essentials
- Entrepreneurial Fundamentals
- Entrepreneurship
- Human Resources
- Payroll Specialist
- Professional Sales Skills
- Purchasing and Inventory Management
- Social Media Management
- Sport Management

ENGINEERING TECHNOLOGY, MANUFACTURING AND TRANSPORTATION

- Architectural Drafting and Design
- Automotive Service Technology
- Civil Engineering Technology
- Commercial Refrigeration
- Construction Management
- Diesel Equipment Technology
- Drafting and 3D Technologies
- Electrical Lineworker Technology
- Electrical Technology: Electrician
- Engineering
- Heating, Ventilation Air Conditioning/ Refrigeration
- Plumbing Technology
- PowerSports Technology
- Survey Technician

HEALTH SCIENCE TECHNOLOGY

- Autism Spectrum Disorder
- Cardiovascular Technology - Invasive
- Dental Assisting
- Dental Hygiene
- Dialysis Technician
- Health Information Technology/Coding
- Medical Administrative Assistant
- Medical Assistant
- Medical Coding and Insurance
- Medical Laboratory Technology
- Medical Office Assistant
- Medical Receptionist
- Child and Adolescent Therapeutic Behavioral Health
- Nursing (Advanced Standing and Generic)
- Nursing (Practical Nursing)
- Phlebotomy Technician
- Radiologic Technology
- Surgical Technology

HUMAN SERVICES

- Advanced Practice Esthology
- Child Care and Education
- Cosmetology
- Correctional Officer
- Criminal Justice
- Early Childhood and Paraprofessional Education
- Esthetist
- Fire Service Preparation
- Massage Therapy
- Nail Technician
- Paralegal

DETROIT LAKES CAMPUS

900 Highway 34 East
Detroit Lakes, MN 56501

FERGUS FALLS CAMPUS

1414 College Way
Fergus Falls, MN 56537

MOORHEAD CAMPUS

1900 28th Avenue South
Moorhead, MN 56560

WADENA CAMPUS

405 Colfax Avenue SW
Wadena, MN 56482

Looking for flexible education? Many of our programs are available online. Visit minnesota.edu/degrees to learn more.

You belong here. minnesota.edu



Minnesota State Community and Technical College, A member of the Minnesota State system, is an affirmative action, equal opportunity educator and employer.

